

AltaBAXTER

011HO08195 EX-91

EMERALD-ACR-SA T-BAXTER B/R TV TL
Blitz x Mtoto x Mandel



Reg USA 000132973942
* DOB04/07/2002 RHA 100%
aAa 342561 DMS 234

- ▲ Total Package Deal
- ▲ Type Leader - Dairy Strength
- ▲ Second Crop calves look great
- ▲ Calving & Stillbirth Traits
- ▲ Global Sire of Sons

GENOMIC USDA SIRE SUMMARY, 08/2009 PTA '2005

MILK	+1755Lbs	94% Rel		EFI	6.4%
PROTEIN	\$+193	-.06%	+36 Lbs	DPR	-1.2
FAT		+.01%	+67 Lbs	SCS	3.13
CHEESE MERIT	\$+357	NM\$	+395	PL	+1.9
HEALTH	+1.32	87% Rel		Alta Value	\$373
105 Dtrs/ 57 Herds	100% US Dtrs	27650m	3.7%	1030f	2.9%
					814P

GENOMIC TYPE SUMMARY, 08/2009

PTA TYPE +2.80 UDC +2.24 FLC +2.27 89% Rel **TPI 1785**
Type +2.80, 83 Dtrs/ 48 Herds Reliability 89%

Linear 08/2009	-2	-1	1	2	
Stature				+2.63	Tall
Strength				+2.44	Strong
Body Depth				+3.14	Deep
Dairy Form				+3.20	Open
Rump Angle				+0.98	Sloped
Thurl Width				+2.90	Wide
R. Legs-S View				-1.12	Posty
R. Legs-R View				+1.95	Straight
Foot Angle				+2.85	Steep
F & L Score				+2.28	High
F. Udder Att.				+2.25	Strong
R. Udder Ht.				+4.43	High
R. Udder Wid.				+4.74	Wide
Udder Cleft				+2.79	Strong
Udder Depth				+0.64	Shallow
F. Teat Place				+0.16	Close
Rear Teat Placement				+1.49	Close
Teat Length				+2.42	Long

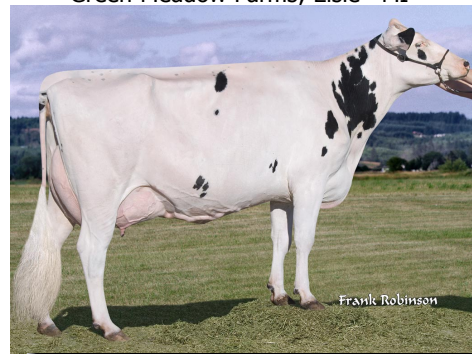
Calving Traits (08/09)

Sire Calving Ease	8%	99% Rel	19972 Observ.	
Daughter Calving Ease	6%	80% Rel	184 Observ.	100 Dtr.
Sire Stillbirth	6.9%	98% Rel	18042 Observ.	
Daughter Stillbirth	5.3%	71% Rel	144 Observ.	81 Dtr.

Sire: Fustead Emory Blitz-ET TV TL EX-92
Dam: Emerald-ACR-SA T-Mallory-ET VG-87
 2-07 2x 305d 24,890m 3.9% 961f 3.5% 879p
MGS: Carol Prelude Mtoto-ET TV TL
MGD: Emerald-Acr-Sa Toot-ET EX-90 GMD DOM
 5-11 2x 365d 39,090m 5.1% 1984f 3.5% 1372p
MGGS: Lutz-Meadows E Mandel-ET TV TL VG-85 - 023HO00453
MGGD: Emerald-Acr-Sa Tulip-ET TV EX-94 GMD DOM
 4-06 2x 365d 41,203m 4.0% 1651f 3.5% 1455p



Green Meadow Baxter Ami No 2114
(2nd Lact)
Green Meadow Farms; Elsie - MI



Anchor J Baxter No 6674 (2nd Lact)
Stevinson Corporation; Stevinson - CA



New Flevo Baxter No 5944 (2nd Lact)
New Flevo Dairy; Adrian - MI



Mel-Delin Baxter No 5427
Ray Souza Dairy; Turlock - CA